

# THROUGH THE LENS- LONGMEADOW 100 YEARS AGO

*sponsored by the Longmeadow Historian*

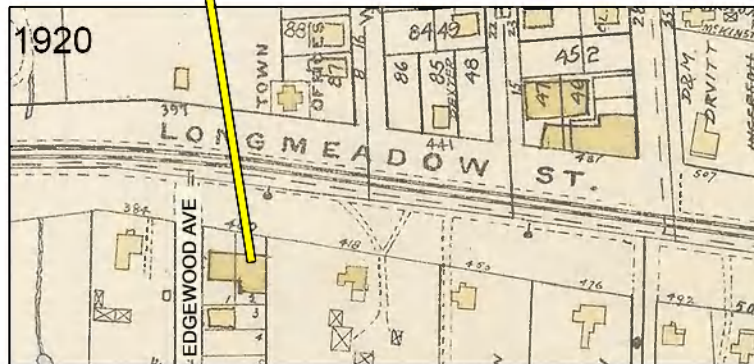


Photo: Paesiello Emerson Collection  
Digital Commonwealth/ Longmeadow Historical Society

The CVS/ Rinaldi's/ Alex's Bagels building in an earlier time period... This original structure was completed in late 1916 and has served as a home for the Longmeadow Garage, Longmeadow Public Market, Inc. St. Andrew's Church + many other local businesses throughout the years.

by Judy and Jim Moran