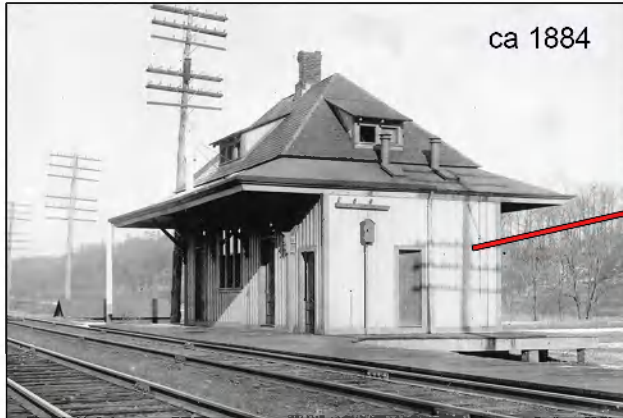
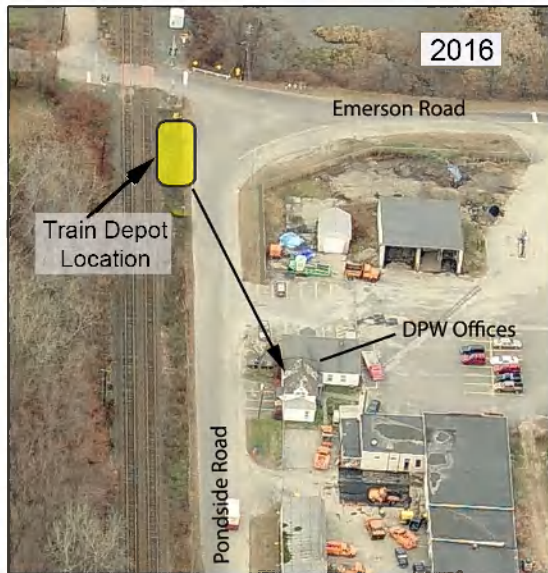


## THROUGH THE LENS- LONGMEADOW 100 YEARS AGO

*sponsored by the Longmeadow Historian*



**Public Works Service Building/ Caretaker's Cottage**  
Erected 1931 at a cost of \$23,565  
*1931 Longmeadow Annual Town Report*



In 1931 Longmeadow Town voters approved moving the old train station ["depot"] to the current site of the DPW Main Offices for use as a Caretaker's Cottage. The train "depot" building was built ~ 1884 and remains as part of the current DPW facility 130+ years later!

by Judy and Jim Moran