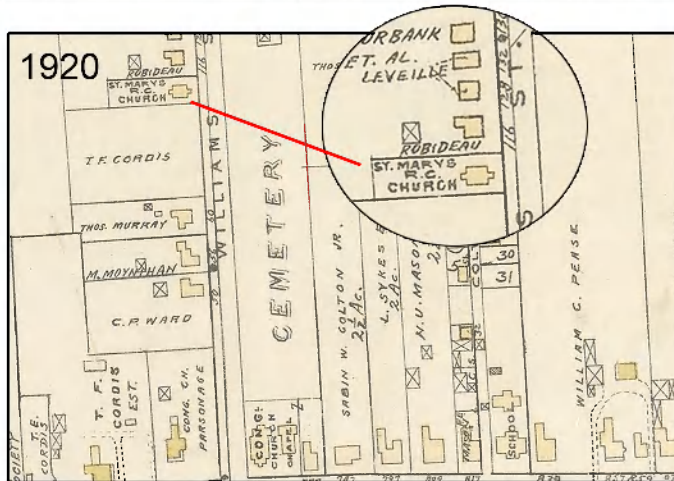


THROUGH THE LENS- LONGMEADOW 100 YEARS AGO

sponsored by the Longmeadow Historian



Date of photo- unknown



St. Mary's RC Church

In 1868 a group of five men purchased a building that was believed to have been a spectacle shop located across the Town Green from First Church. They moved this building to Williams Street opposite Longmeadow Cemetery. On October 2, 1870 it was dedicated as St. Mary's Church.

In 1924 St. Mary's Church was moved to a portable church that had been set up behind the site of the current church at the corner of Bliss Road and Longmeadow Street. On Christmas Eve in 1931 a new St. Mary's Church was opened.

Ref: Reflections of Longmeadow

by Judy and Jim Moran