

THROUGH THE LENS- LONGMEADOW 100 YEARS AGO

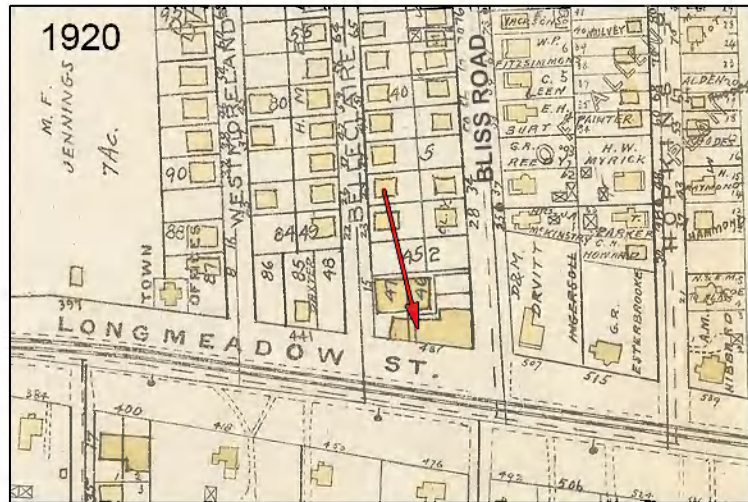
sponsored by the Longmeadow Historian



THE COLONNADE- LONGMEADOW ST & BLISS ROAD
APRIL 1919



GRAVES/ LONGMEADOW GARAGE 1917



The GRAVES GARAGE (also known as the Longmeadow Garage) was located at the corner of Longmeadow Street and Belleclaire Avenue. Automotive repairs and gasoline sales were its primary business. The Colonnade built in 1917 also included a number of stores including Ford Drug and The Atlantic and Pacific Tea Company.

by Judy and Jim Moran